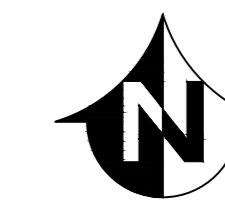
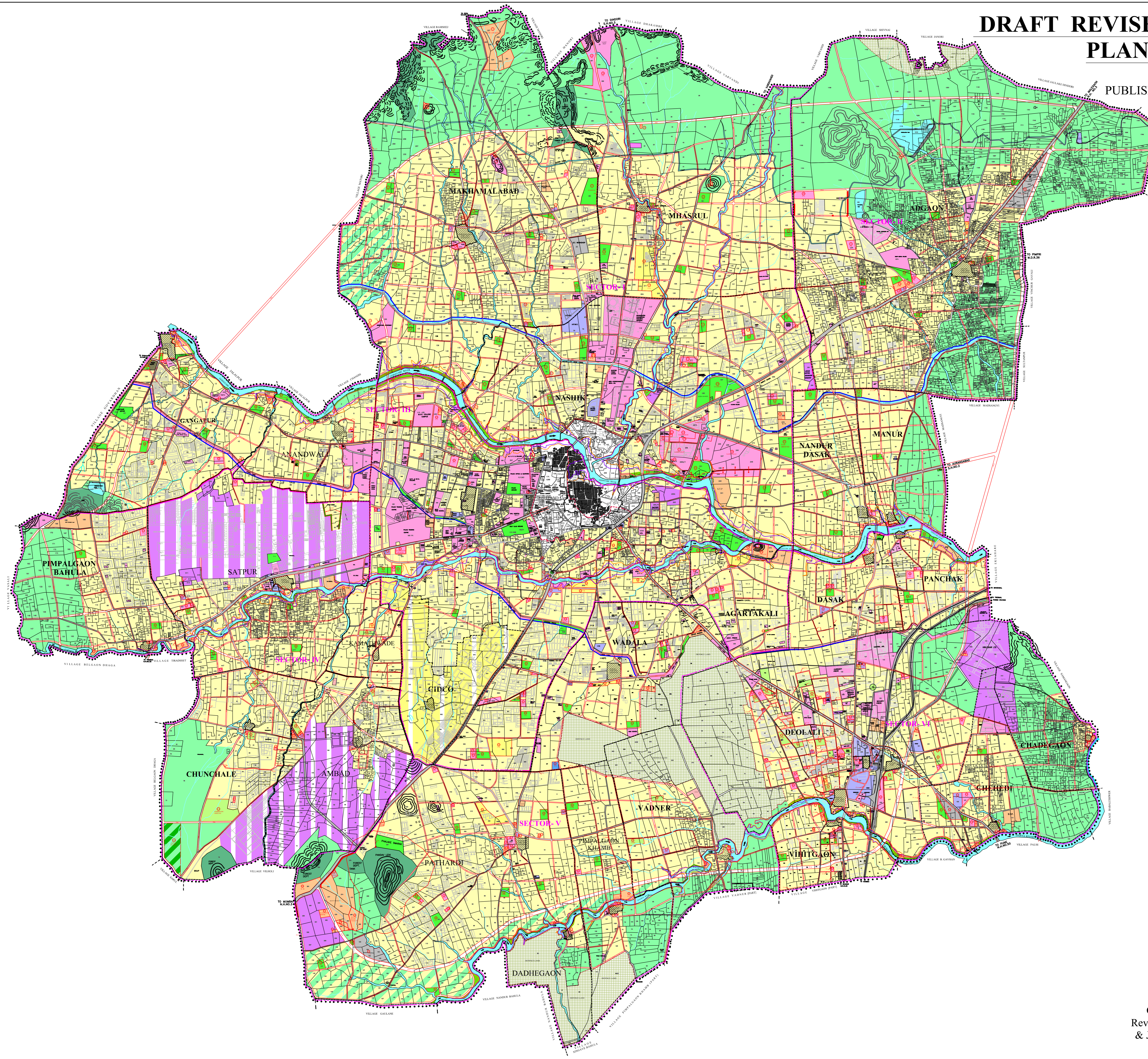


DRAFT REVISED DEVELOPMENT PLAN NASHIK

PROPOSED LAND USE PLAN
PUBLISHED U/S 26(1) OF M.R. & T.P. ACT 1966



SCALE :- 1 : 20,000



LEGEND

- MUNICIPAL CORPORATION LIMIT ●●●●
- SECTOR BOUNDARY - - - -
- VILLAGE BOUNDARY = = = =
- TOWN PLANNING SCHEME NO.I & II - - - -
- CORE AREA (GAOTHAN) = = = =

- RESIDENTIAL [Yellow Box]
- FUTURE URBANAIZATION [Green/Yellow Box]
- COMMERCIAL [Pink Box]
- INDUSTRIAL [Purple Box]
- AGRICULTURAL [Green Box]
- FOREST [Dark Green Box]
- PUBLIC/ SEMI PUBLIC [Light Green Box]
- PUBLIC UTILITY [Light Blue Box]
- TRANSPORTATION [Grey Box]
- P.G. & RECREATIONAL (G./PARK /R.C./STADIUM/GODA PARK) [Light Green Box]
- GREEN BELT / BUFFER ZONE [Light Green Box]
- CATTLE STABLE [Light Green Box]
- WATER BODIES [Light Blue Box]
- RAILWAY [Grey Box]
- ROADS (EXISTING) [Grey Box]
- BRIDGES (PROP./EXISTING) [Grey Box]
- PROPOSED ROAD [Red Box]
- ROADS TO BE IMPLEMENTED AT THE TIME OF REDEVELOPMENT [Red Box]
- CYCLE TRACK [Blue Box]
- CIDCO AREA [Yellow Box]
- DEFEND LANDS [Grey Box]
- M.I.D.C. AREA [Purple Box]
- HIGH FLOOD LINE [Red Box]
- LOW FLOOD LINE [Blue Box]

FULL FORM OF ABBRIVIATIONS

- A.P.M.C. = AGRICULTURAL PRODUCE MARKET COMMITTEE
- B.G. = BURIAL GROUND
- C.G. = CREMATION GROUND
- C.P. = CHILDREN'S PARK
- E.A. = EDUCATIONAL AMENITY
- E.S.S. = ELECTRIC SUB-STATION
- E.S.R. = ELEVATED SERVICE RESEVOIR
- F.B.S. = FIRE BRIGADE STATION
- G. = GARDEN
- G.B. = GREEN BELT
- H. = HOSPITAL
- H.S. = HIGH SCHOOL
- H.Z. = HAWKERS' ZONE
- K.S. = KHOKA SHOPPING
- L.C.C. = LIBRARY AND COMMUNITY CENTRE
- LIB. = LIBRARY
- M.A. = MEDICAL AMENITY
- M.M. = MUNICIPAL MARKET
- M.S.W.F. = MUNICIPAL SOLID WASTE FACILITY
- M.M. = MUTTON MARKET
- O.S. = OPEN SPACE
- P. = PARKING
- P.P. = PETROL PUMP
- P.A. = PUBLIC AMENITY
- P.G. = PLAY GROUND
- P.H. = PUBLIC HOUSING
- P.O. = POST OFFICE
- P.S. = PRIMARY SCHOOL
- P.Stn. = POLICE STATION
- R.C. = RECREATION CENTRE
- S.P. = SWIMMING POOL
- S.T.P. = SEWAGE TREATMENT PLANT
- T. = TEMPLE
- T.E. = TELEPHONE EXCHANGE
- T.T. = TRUCK TERMINUS
- V.M. = VEGETABLE MARKET
- W.R. = WATER RESERVOIR
- W.W. = WATER WORKS

Officer Appointed u/s 21(4A),
Revised Development plan of Nashik
& Joint Director of Town Planning,
Nashik Division, Nashik.